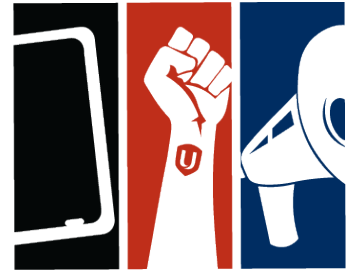


# UNIFOR Education

## UNIFOR – Service de l'éducation



### Education PEL Schedule - Port Elgin Spring/Summer 2025

To Register & For Information: [pel@unifor.org](mailto:pel@unifor.org)

#### Date & Courses Offered

---

February 23-28, 2025

Registration Deadline: January 10, 2025

[Collective Bargaining](#)

[Conflict Resolution](#)

[Grievance Handling & Workplace Leadership](#)

[Stress: The Workplace Hazard](#)

[WSIB: Compensation for ON Workers - Introduction](#)

*ONSITE CHILD CARE\*\*Child Care Registration Deadline (0-12 years): January 10/25*

---

March 2-7, 2025

Registration Deadline: January 17, 2025

[Grievance Handling & Workplace Leadership](#)

[Health & Safety](#)

[Human Rights](#)

[Local Executive Board Training \(LUEB\)](#)

(Pre-requisite: must currently hold an elected or appointed position on your Local Union Executive Board.)

*ONSITE CHILD CARE\*\*Child Care Registration Deadline (0-12 years): January 17/25*

---

---

March 9-14, 2025

Registration Deadline: January 24, 2025

[Accident & Incident Investigation](#)

[Canada & The World](#)

[Electoral Candidate Development](#)

*ONSITE CHILD CARE/TEEN PROGRAM \*\*Child Care Registration Deadline (0-18 years):  
January 24/25*

---

March 16-21, 2025

Registration Deadline: January 31, 2025

[Conflict Resolution](#)

[Ergonomics - Introduction](#)

[Grievance Handling & Workplace Leadership](#)

[Health & Safety](#)

[Human Rights](#)

*ONSITE CHILD CARE\*\*Child Care Registration Deadline (0-12 years): January 31/25*

---

March 23-28, 2025

Registration Deadline: February 7, 2025

[Black, Indigenous & Workers of Colour Leadership Program - Week 1](#)

[Worker Referral Assistance Program \(WRAP\) - Level 1](#)

*ONSITE CHILD CARE\*\*Child Care Registration Deadline (0-12 years): February 7/25*

---

March 30-April 4, 2025

Registration Deadline: February 14, 2025

[Conflict Resolution for Women](#)

[Women Activists](#)

[Women in Leadership](#) (\*UPDATED CURRICULUM\*)

[Women's Advocate Basic Training 40 hr](#)

(Bargained Advocates Only - Locals will receive Call Letter.)

*ONSITE CHILD CARE/TEEN PROGRAM \*\*Child Care Registration Deadline (0-18 years):  
February 14/25*

---

---

April 6-11, 2025

Registration Deadline: February 21, 2025

[Occupational Hygiene](#)

(Formerly Industrial Hygiene. Pre-requisite: must be an active Health & Safety Rep.)

[Racial Justice Advocate Basic Training 40h](#)

(Bargained Advocates Only - Locals will receive Call Letter.)

*ONSITE CHILD CARE* \*\*Child Care Registration Deadline (0-12 years): February 21/25

---

April 13-17, 2025

Registration Deadline: February 28, 2025

[Planning for Your Future/Pre-Retirement Course](#)

[Local Executive Board Training](#)

(Pre-requisite: must currently hold an elected or appointed position on your Local Union Executive Board.)

\*\*PEL SHORT WEEK\*\*

*ONSITE CHILD CARE* \*\*Child Care Registration Deadline (0-12 years): February 28/25

---

April 22-25, 2025

Registration Deadline: March 7, 2025

[Collective Bargaining](#)

[Grievance Handling & Workplace Leadership](#)

[Health & Safety](#)

\*\*PEL SHORT WEEK\*\*

*ONSITE CHILD CARE* \*\*Child Care Registration Deadline (0-12 years): March 7/25

---

May 4-9, 2025

Registration Deadline: March 21, 2025

[Black, Indigenous & Workers of Colour Leadership Program - Week 2](#)

---

May 25-30, 2025

Registration Deadline: April 11, 2025

[Pride Activist](#)

---

---

June 8-13, 2025

Registration Deadline: April 25, 2025

[Accident & Incident Investigation](#)

[Arbitration for Leadership](#)

[Women's Advocate Basic Training 40 hr](#)

**(Bargained Advocates Only - Locals will receive Call Letter.)**

[Worker Referral Assistance Program - Level 2](#) (Pre-requisite: WRAP Level 1.)

*ONSITE CHILD CARE\*\*Child Care Registration Deadline (0-12 years): April 25/25*

---

June 22-27, 2025

Registration Deadline: May 9, 2025

[Stress: The Workplace Hazard](#)

[Turtle Island: A First Peoples Awareness for Union Activists and Leaders](#)

[Women Activists](#)

*ONSITE CHILD CARE\*\*Child Care Registration Deadline (0-12 years): May 9/25*

---

July 13-18, 2025

Registration Deadline: May 30, 2025

[Collective Bargaining](#)

[Conflict Resolution](#)

[Grievance Handling & Workplace Leadership](#)

[Health & Safety](#)

[Human Rights](#)

*ONSITE CHILD CARE\*\*Child Care Registration Deadline (0-12 years): May 30/25*

---

July 27-August 1, 2025

Registration Deadline: June 13, 2025

[Canada & The World](#)

[Grievance Handling & Workplace Leadership](#)

[Human Rights](#)

[Local Executive Board Training \(LUEB\)](#)

**(Pre-requisite: must currently hold an elected or appointed position on your Local Union Executive Board.)**

[Stress: The Workplace Hazard](#)

[WSIB Appeals \(Workplace Safety & Insurance Board ON Only\)](#)

**(Pre-requisite: Compensation for Ontario Workers.)**

*ONSITE CHILD CARE\*\*Child Care Registration Deadline (0-12 years): June 13/25*

---

---

August 17-22, 2025

Registration Deadline: July 4, 2025

[Collective Bargaining](#)

[Conflict Resolution](#)

[Grievance Handling & Workplace Leadership](#)

[Health & Safety](#)

[Human Rights](#)

**ONSITE CHILD CARE** \*\*Child Care Registration Deadline (0-12 years): July 4/25

---

**Child Care Registration** – when on-site childcare is offered, you **MUST REGISTER AT THE TIME YOU SUBMIT YOUR APPLICATION** – **Deadline for Child Care is the same as the course and is a FIRM deadline.** Please contact the Family Education Child Care Centre for the on-site child care registration forms at 1-800-265-3735 ext. 3233 or email **Laurie Wright** at [fecchildcare@unifor.org](mailto:fecchildcare@unifor.org)

Conference registrations are to be sent to the Front Desk on the Centre Registration form – not PEL application forms. **PEL funds are not used for Conferences - PEL courses only.**

\*\* Courses are occasionally subject to change. Please check the website to ensure you have the most up-to-date schedule\*\* [uniforeducation.org](http://uniforeducation.org)  
Questions about the schedule? Please contact [pel@unifor.org](mailto:pel@unifor.org)

rk/ab:cope343

---